



DieTronic

lubrication technology

USER AND MAINTENANCE MANUAL SAW LUBE

Dietronic Srl – lubricating technology

Via Madre Teresa di Calcutta, 13
26866 Sant'Angelo Lodigiano (LO) - Italia

Tel +39 0371 210129
Fax +39 0371 214321

info@dietronic.eu
www.dietronic.eu

Index

| | | |
|-----------|---|-----------|
| 1. | GENERAL INFORMATION | 3 |
| 1.1. | WARNINGS | 3 |
| 1.2. | IDENTIFICATION OF THE MANUFACTURER..... | 3 |
| 1.3. | MACHINE IDENTIFICATION..... | 3 |
| 1.4. | REQUEST FOR INTERVENTION AND ASSISTANCE | 3 |
| 1.5. | GUARANTEE..... | 3 |
| 1.6. | ACCEPTABLE ENVIRONMENTAL VALUES FOR PROPER FUNCTIONING..... | 4 |
| 1.7. | SAFETY REQUIREMENTS..... | 4 |
| 2. | MACHINE DESCRIPTION | 6 |
| 3. | INSTALLATION | 7 |
| 3.1 | ELECTRICAL, MECHANICAL AND PNEUMATIC CONNECTIONS | 7 |
| 3.2 | EXTERNAL SIGNAL CONNECTION | 9 |
| 3.3 | CONTROL PANEL AND SETTING | 9 |
| 3.4 | FILL THE TANK WITH OIL | 12 |
| 4 | PREVENTIVE MAINTENANCE | 13 |
| 5 | REGULAR MAINTENANCE | 14 |
| 5.1 | NOZZLE CLEANING | 14 |
| 5.2 | VALVE REPLACEMENT | 14 |

1. GENERAL INFORMATION

1.1. Warnings

The parts of the manual in bold refer to warning signs, indicate those procedures whose failure or partial observance could cause injury to the operator.

This instruction book is strictly reserved for Customers in possession of the machine. The information contained herein may be subject to change without notice.

The documents delivered with the machine, including the following manual, are the property of Dietronic Srl, which reserves all rights. For no reason may this booklet or part of it, or the attachments provided be reproduced in any form or medium without the authorization of Dietronic Srl.

1.2. Identification of the manufacturer

Dietronic s.r.l.
Via Madre Teresa di Calcutta, 9/13
26866 Sant'Angelo Lodigiano (LO) - Italy

1.3. Machine identification

| | |
|--------------|-----------------|
| MACHINE TYPE | Saw Lube |
| MODEL | Saw Lube |
| SERIES | 2023 |

1.4. Request for intervention and assistance

Dietronic s.r.l.
Via Madre Teresa di Calcutta, 9/13
26866 Sant'Angelo Lodigiano (LO) – Italy
Service + 39 348 399 3557
Phone +39 0371 210129
Fax +39 0371 214321
email info@dietronic.eu
www.dietronic.eu

1.5. Guarantee

The machinery supplied is guaranteed for 12 months from the date of installation (30 days from shipment). This warranty, concerning defects and defects deriving from materials, construction or workmanship, is conditional on their notification within 8 days of their discovery, excluding from the warranty those defects and defects that depend on failure to comply with the service and maintenance instructions provided by the seller, from bad or inadequate use, from excessive exploitation of the machinery, tampering, modification or repair made by the buyer and the use of lubricants, detergents or other unsuitable products. The warranty is substantiated and exhausted in the free spare part, ex processing plant. The costs of labor (disassembly, reassembly or other), shipping and transport are borne by the buyer as well as the relative risks, with him waives the request for any compensation for damage to persons or things that may arise as a result of the aforementioned defects or defects. The buyer will only enjoy the guarantees of the seller's subcontractors for damage to electrical equipment, electric motors, ball bearings, pressure gauges, gaskets, chains and any other piece not performed directly by the seller and will always waive any compensation for damages that may occur even during the warranty period. Components replaced

under warranty will not extend for any reason the expiration of the initial warranty period, which starts, as indicated above, from the date of shipment of the complete equipment.

1.6. Acceptable environmental values for proper functioning

The machine is designed to operate at an ambient temperature between 5 and 35°C above zero, with an ambient humidity between 30% and 95% non-condensing.

1.7. Safety requirements

The terms used in this manual to locate the various components of the machine such as, for example, right, left, top, bottom, etc., always refer to the correct position of an operator during the normal course of work (in front of the machine).

Before commissioning the machine, the operator must have read this publication carefully and have acquired a thorough knowledge of the technical specifications and machine controls.

It is advisable for the operator to undergo a period of training in the use of the machine.

Before installing the machine, check that the area used is compatible with the overall dimensions of the machine.

Do not allow unauthorized and qualified personnel to operate, adjust, operate or repair the machine. Also, refer to this manual for the necessary operations.

Before cleaning and/or maintaining the machine and before removing any protection, make sure that the main switch is in the OFF position, so as to remove the power supply to the machine during operator intervention.

The power supply system must be equipped with an automatic release system upstream of the main circuit breaker of the machine and with a suitable earthing system that meets all the requirements of industry standards for accident prevention.

If you need to work on or near the main switch, remove voltage from the line to which the main switch is connected.

The moving parts of the machine do not stop immediately after switching it off. It is recommended, before intervening on the machine, to make sure that all moving parts have stopped.

All checks and maintenance operations that require the removal of safety protections are carried out under the full responsibility of the user. It is therefore recommended to have these operations performed only by specialized and authorized technical personnel.

Check that all safety devices (barriers, protections, casings, microswitches, etc.) have not been tampered with and that they are fully functional before operating; otherwise provide for their accommodation. Do not remove safety devices.

Do not tamper with the electrical, pneumatic or any other mechanism for any reason.

Do not attempt to climb on or climb over the machine in operation.

Do not wear rings, wristwatches, jewelry, torn or dangling clothing such as ties, scarves, unbuttoned jackets or any garment that may become entangled in moving parts. Instead, wear clothing approved for safety purposes such as, for example, helmets, non-slip shoes, gloves, anti-noise headphones, safety glasses when necessary.

Do not wear clothing with wide sleeves during work and especially during cleaning operations.

In the case of repairs make sure that there are:

moving organs that can come into operation.

unstable parts by their nature positioned on the machine or in its vicinity.

in any case, provide for their locking with appropriate tools.

Do not use your hands instead of proper tools to operate the machine.

Do not use your hands or other objects to stop moving parts.

Pay close attention to the plates on the machine every time you are preparing to operate on the same or nearby.

The user is obliged to keep all the plates legible, changing, if necessary, the position in order to guarantee complete visibility to the operator.

The user is also obliged to replace all plates that for any reason have deteriorated or that are not clearly visible, requesting new ones from the spare parts service of DIETRONIC SRL.

Unless expressly specified in this manual, avoid repairing or adjusting the machinery or part of it when it, or part of it, is in operation, in order to avoid being hooked by moving parts.

In the event of machine malfunctions or damage to components, contact the maintenance manager, without proceeding with further repairs.

It is absolutely forbidden for anyone to use the machine for uses other than those foreseen and documented. The use of the machine must always take place in the ways, times and places provided for by the rules of good technique, of laws in force in each nation even if in the specific country there were no specific rules to regulate the sector.

DIETRONIC declines all responsibility for any accident or damage to persons or property arising from failure to comply with both the safety requirements and the rules herein.

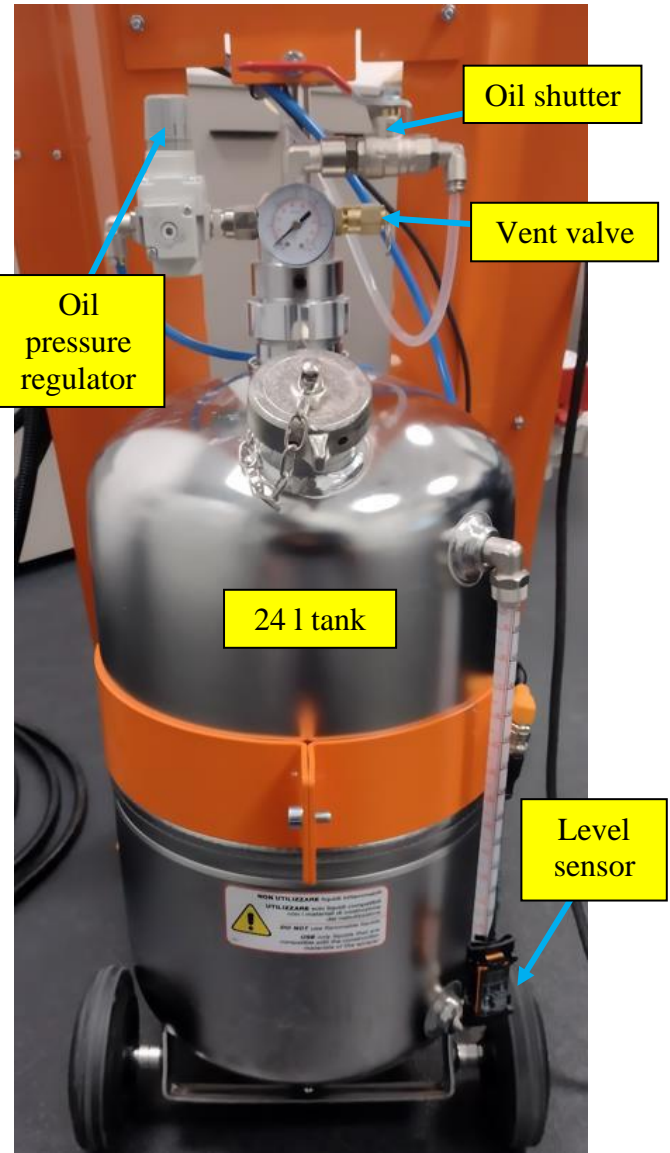
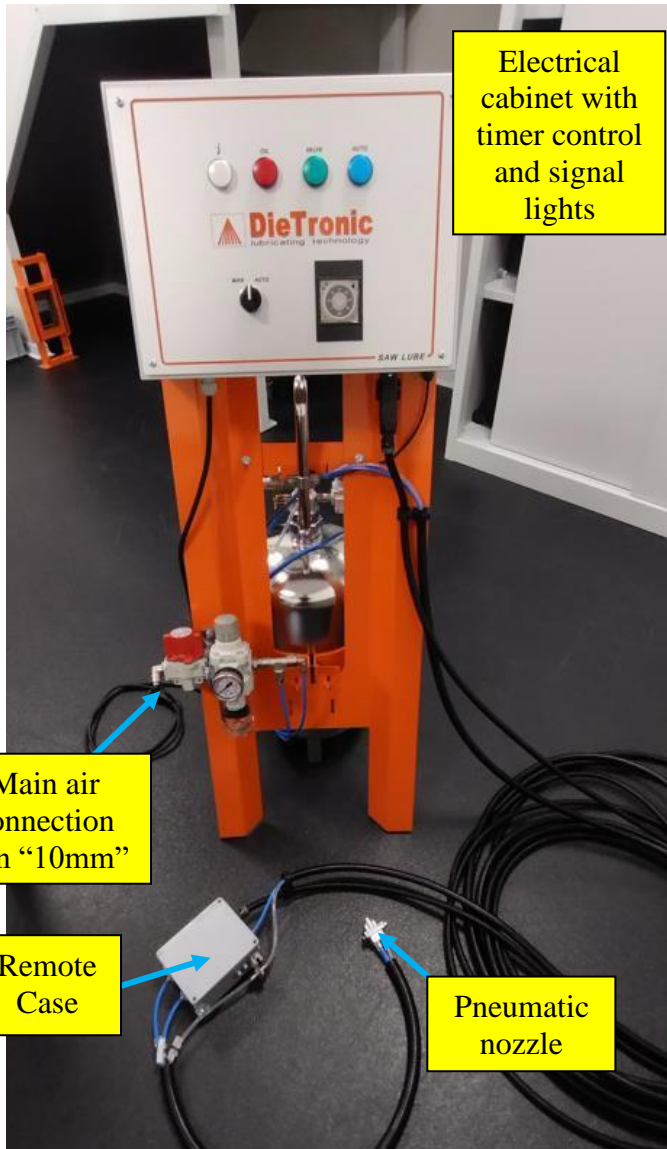
These requirements, together with the rules relating to the installation of the machine and electrical connections constitute, moreover, an integral part of the Industrial Accident Prevention Regulations of each individual country. These safety regulations supplement and do not replace local safety regulations.

NEVER make hasty or makeshift repairs that could compromise the proper functioning of the machine.

IN CASE OF DOUBT, ALWAYS REQUEST THE INTERVENTION OF SPECIALIZED PERSONNEL. ANY TAMPERING BY THE USER RELIEVES THE MANUFACTURER OF ANY RESPONSIBILITY AND MAKES THE USER SOLELY RESPONSIBLE TOWARDS THE COMPETENT BODIES FOR THE PREVENTION OF ACCIDENTS.

2. MACHINE DESCRIPTION

The machine is composed by a 24 l pressure tank unit with a control case with a timer and signals lights and a little case with remoted pneumatic commands a valve with nozzle spray the oil on the saw. The tank is feeded with air by a main regulator.

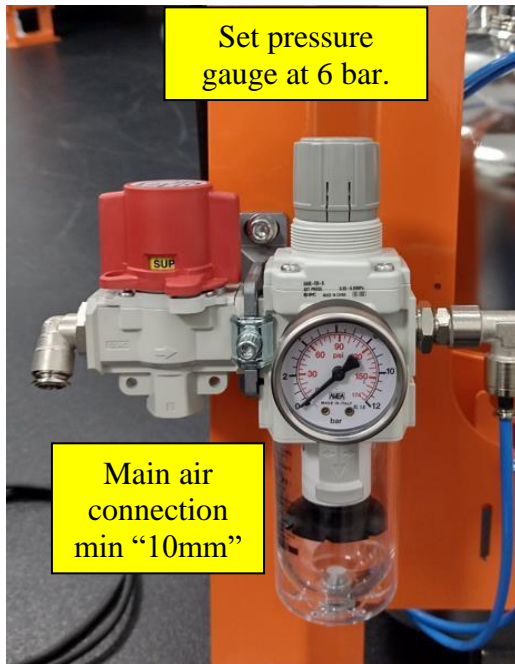


3. INSTALLATION

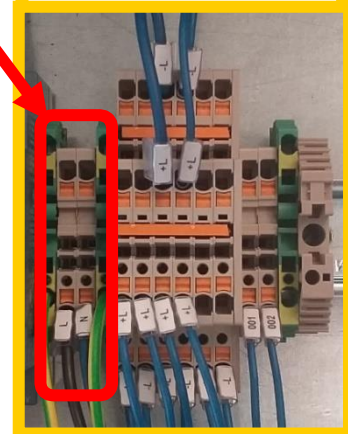
3.1 Electrical, Mechanical and Pneumatic Connections

The main unit can stand alone near by the cutting area of the pipe mill, air and power supply should be connected as follow:

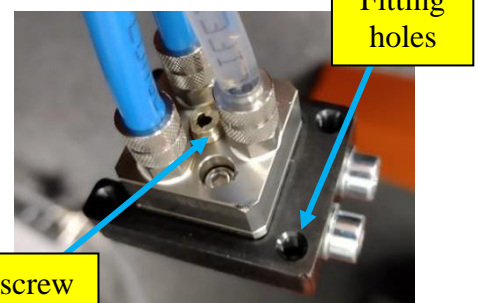
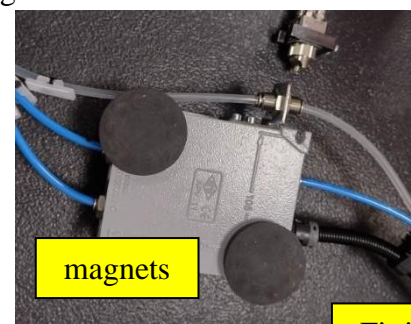
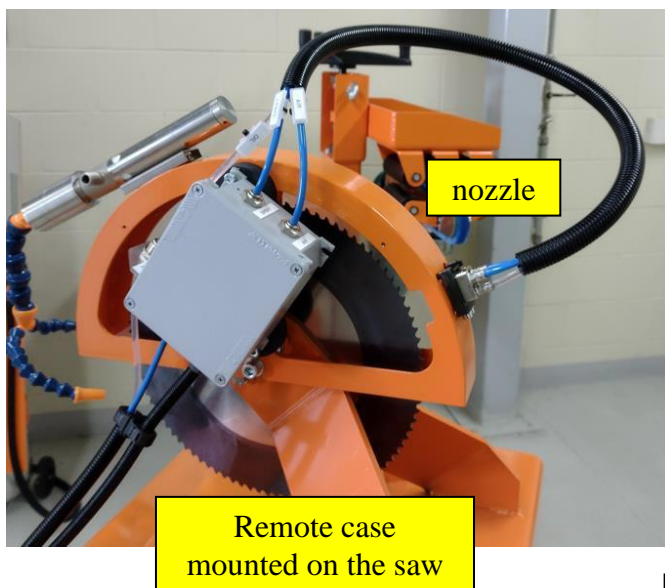
CAUTION: All electrical interventions, both connection to the network and maintenance, must be carried out by qualified technicians authorized to carry out complex and / or extraordinary electrical operations



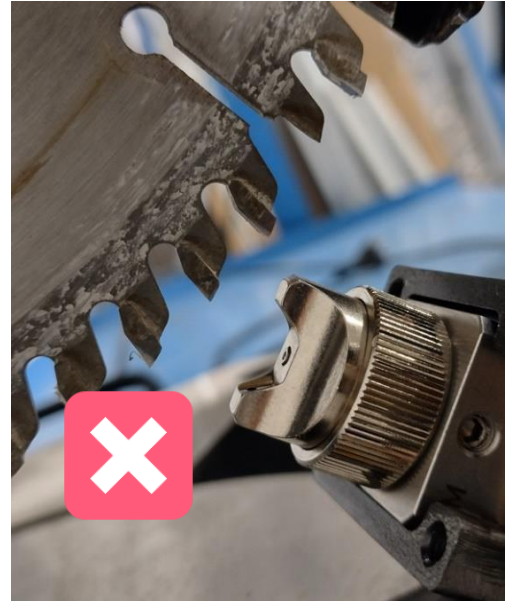
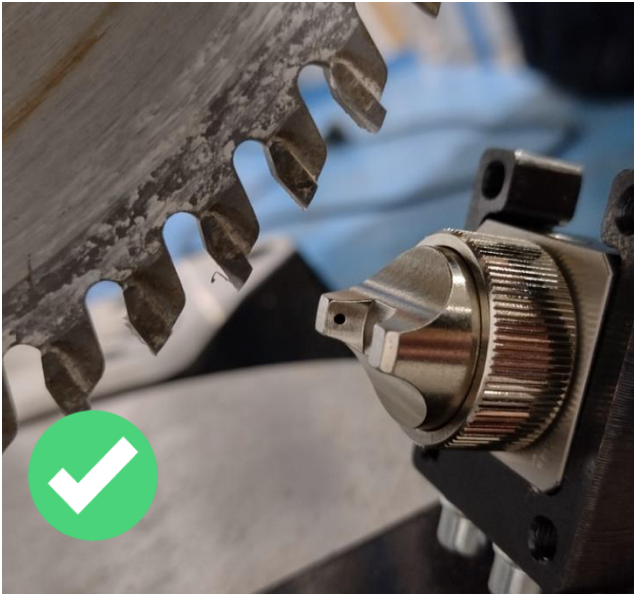
The electrical cabinet must be provided with electrical power: 220V 50/60Hz
The **two phases** must be connected.



the remote case has two strong magnet to allow it to stay in place directly on the saw guard. The nozzle has fitting holes for screwing it directly on the top of the saw guard also.



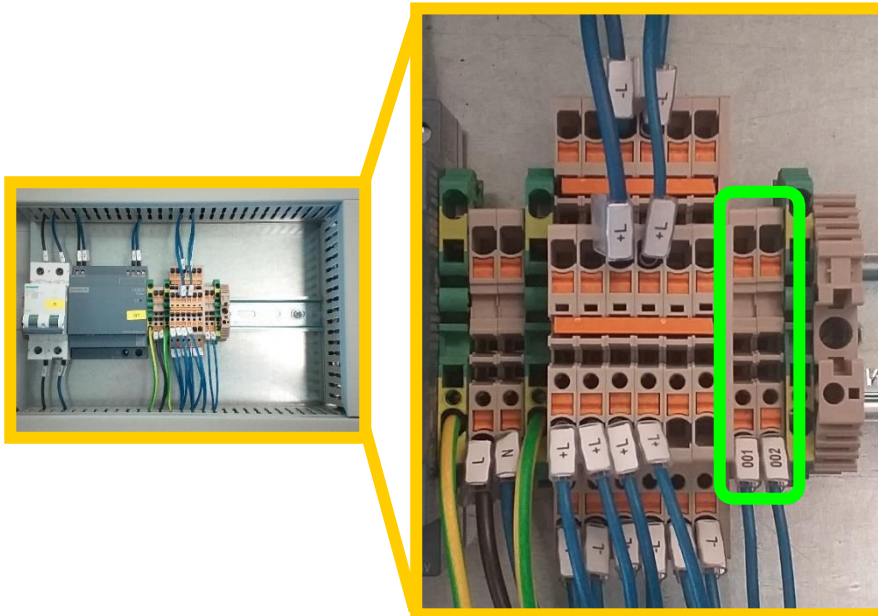
Mounting the nozzle on the guard pay attention to the orientation of the nozzle's cap, it should stay transversal to the saw and not longitudinal to get the right oil spray pattern. It's also recommend to adjust the hose length from the nozzle to the magnetic case to avoid get in the way of the saw



3.2 External Signal connection

To work properly the Sawlube needs to be connected with an external signal typically from the clamps holding the pipe during the cut.

In the electrical cabinet there are **connections for operating the nozzle** (channels 001 and 002). Each time the contacts are closed, the nozzle starts spraying.



Our suggestion is to control the lubrication with the same signal that receive the clamps holding the tube before cutting it.

3.3 Control Panel and Setting

The panel is provided with a timer to set how long the nozzle sprays oil and a manual switch to change from manual and automatic mode, also there are 4 lights indicator for: main power, oil level, active nozzle and auto mode.

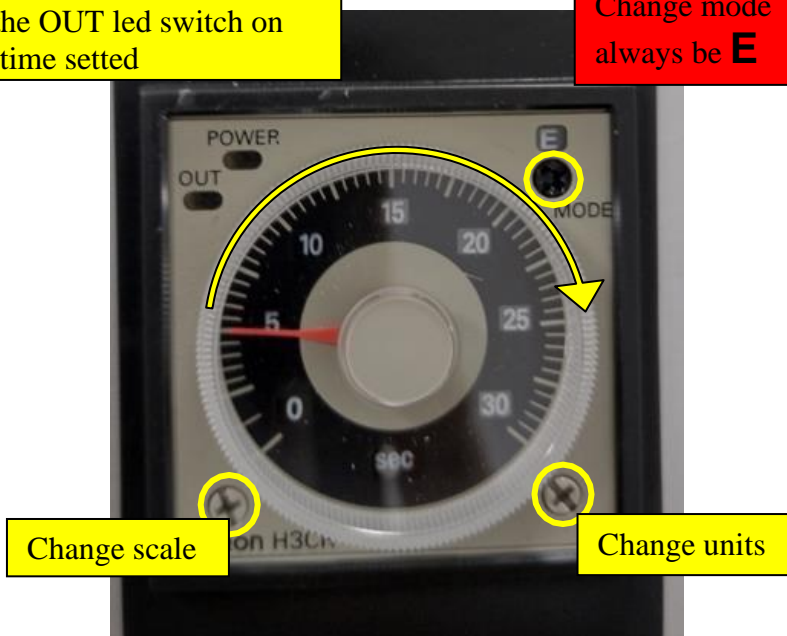


Setting the timer:

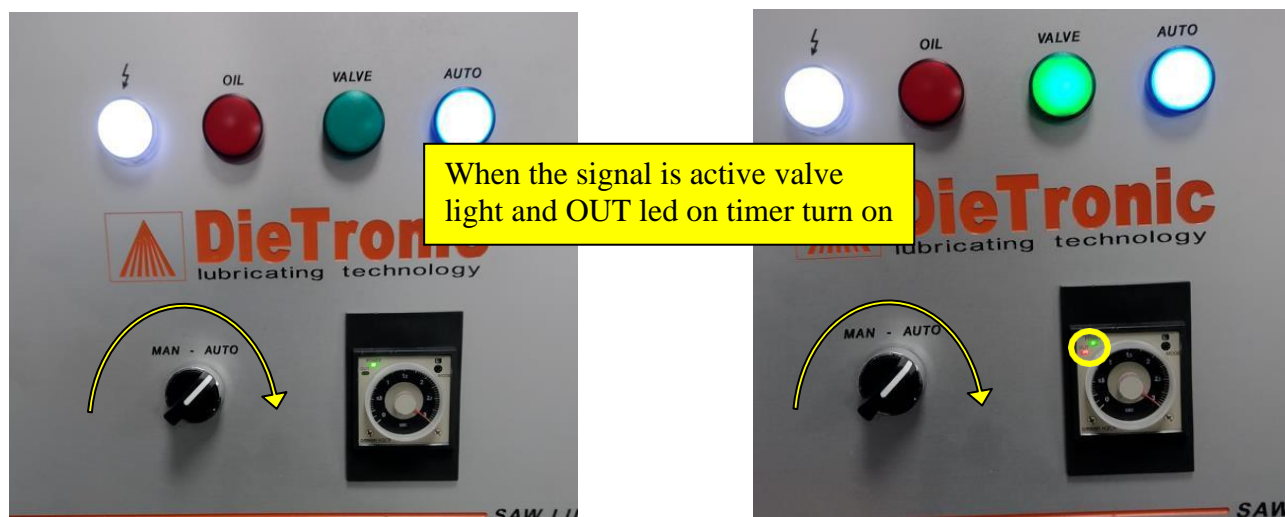
Pay attention to have the timer setted on letter E, you can adjust the units and scale by turning the two screw on the bottom to set the distribution time turn the transparent ring to move the red arrow at the desire value.

Every time the command is active the OUT led switch on for the time setted

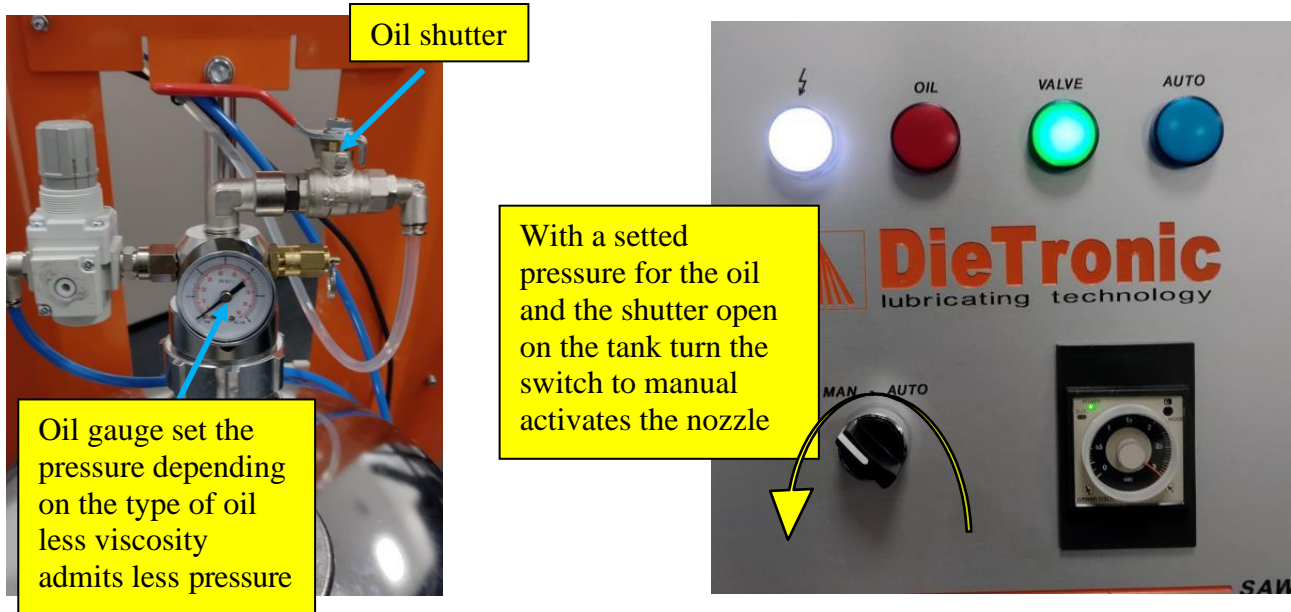
Change mode always be **E**



To work AUTOMATIC MODE move the manual switch to AUTO side, auto lamp on the panel switch ON and every time the signal is active the valve light switch on also for the setted time.



Manual mode allows you to check the functionality of the nozzle and can be used for sets the lubricant amount, when the switch is turned to manual side the command is active and the nozzle spray



To setup up the lubricant amount is recommended to temporary disconnect the spray hose from the remote case, set a pressure for the oil and open the shutter on the tank. **Set the pressure depending on the type of oil less viscosity less pressure hight viscosity maybe need higher pressure.**

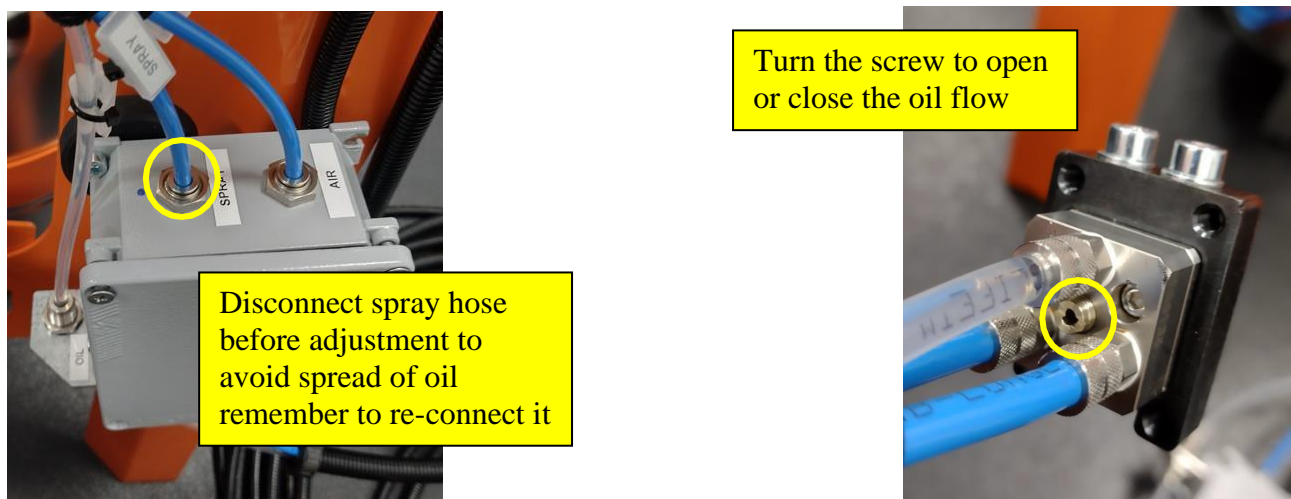
This operation should be done before fix in place the nozzle

Turning the switch to manual allow to see the amount gets out the nozzle

This amount can be adjust turning the setting screw on the nozzle by the way the nozzle is already setted by dietronic personel, you can make adjustments if you needed.

Once you get the desire result you can stop the nozzle moving the switch in the mid side

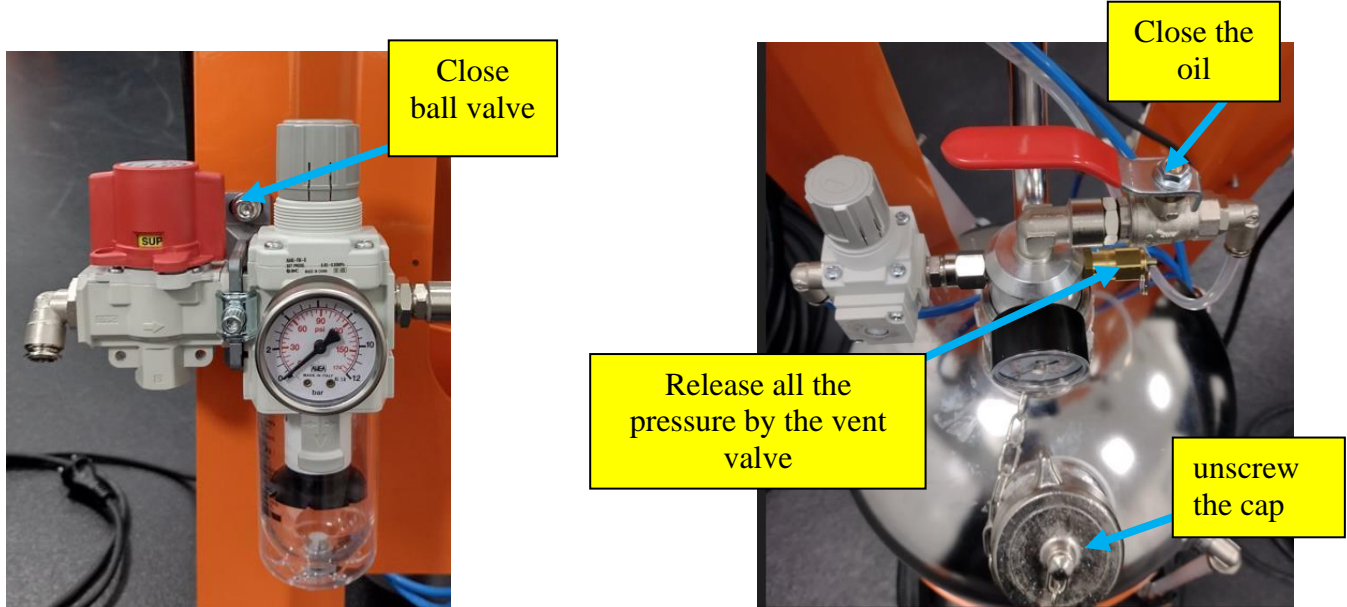
Fix in place the nozzle connect the spray hose to the case



3.4 Fill the tank with oil:

Close the oil shutter, before filling the tank make sure there is no pressure in it, close the main air valve and pull the vent valve to release all the pressure, unscrew the cap and fill with oil.

CAUTION: Never fill the tank with used oil to avoid contamination and clogging of the machine



After filling the tank firmly close the cap, open the main air and the oil shutter, set oil pressure.

4 PREVENTIVE MAINTENANCE

Make sure the oil you pour into the tank is always brand new and not contaminated with any kind of dust or particles.

Is always better pour the oil directly from the drum with the help of a manual pump. In this way you are always sure the oil will not be contaminated because all the oil suppliers guarantee always high filtration grade.

Instead of pouring the oil from the drum into a smaller tank that will surely be contaminated by dust, metal particles and all the other kind of dirt.

Las but not least using a smaller tank can increase the probability of mixing different type of oil which can cause a lot of clogging issue creating oil coagulation.

CAUTION: DO NEVER CHANGE THE OIL TYPE WITHOUT CLEANING THE CIRCUIT AND THE NOZZLE

TRANSFER CONTAMINATION

In order to avoid transfer contamination inside the oil tank, main cause of nozzle clogs, we recommend to refill it by manual pump directly from barrel or IBC container.



5 REGULAR MAINTENANCE

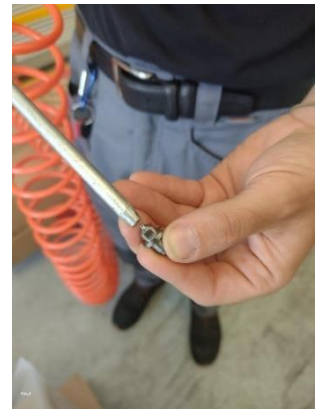
For any doubts, question, or issue with the machine please send an [email](#) and submit and all the possible information (Serial Number, problem you have and maybe photo or video) to help us solve you the problem.

You can also write an e-mail to: service@dietronic.eu
We will give you feedback within 24 hours.

5.1 Nozzle Cleaning

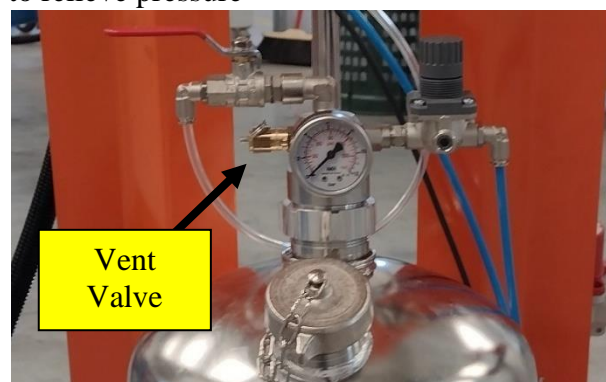
In the event that the nozzle is clogged, or before proceeding with the replacement of the valve, it is recommended to perform a cleaning of the nozzle, to clean a nozzle proceed as follows.

First loosening the four fixing screws, after remove the nozzle from the saw remove the valve hat, to expose the nozzle. Unscrew the nozzle from the valve and visually check that it is not clogged in case the nozzle is clogged you can proceed with cleaning by blowing in the opposite direction of the regular flow.



5.2 Valve Replacement

Close the main air regulator, Pull the vent valve to relieve pressure



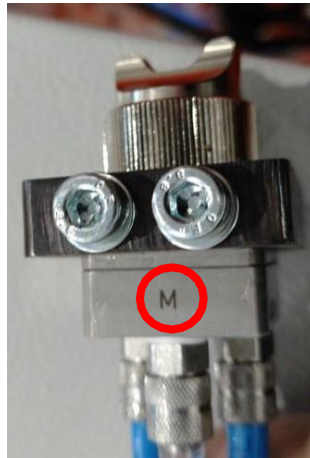
Remove the valve from the saw then remove the tubes from the valve. You can just cut them a little after the ring.

Reconnect the tubes on the new valve. Be careful to connect them in the right way.

Z for spray
connection



M for oil
connection



S for command air
connection

